

## CLINICAL CASE VIGNETTES

### Milwaukee shoulder syndrome

Somashekar SA

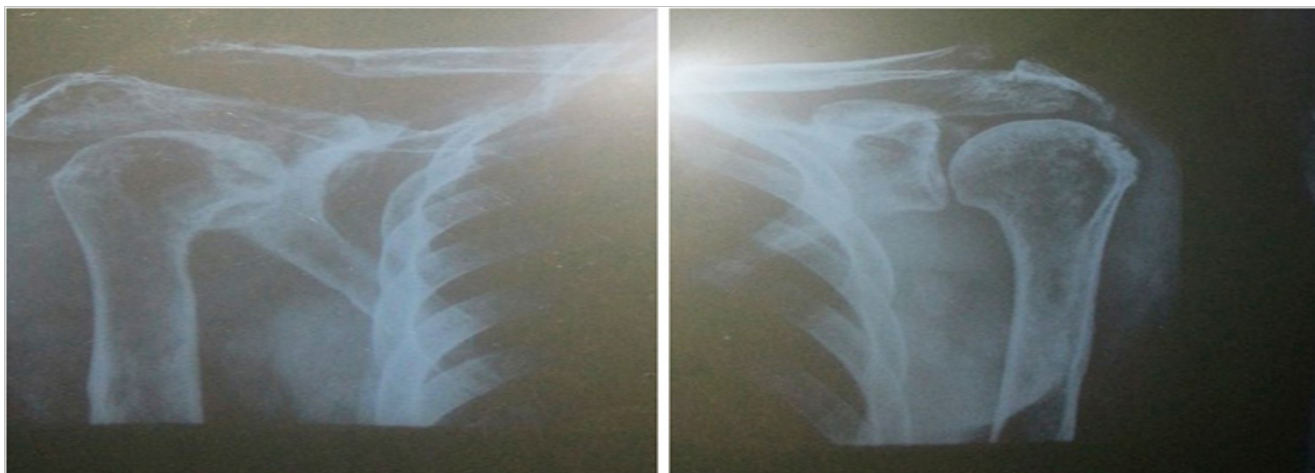
Consultant Rheumatologist, ChanRe Rheumatology and Immunology Center and Research, HOSMAT, Bangalore, India

Milwaukee shoulder syndrome or rapid destructive arthritis of the shoulder is a very rare rheumatological condition characterized by the deposition of hydroxyapatite crystals. The figure 1 shows the shoulder image of a 67-year-old female with a history of bilateral shoulder pain and swelling since 2 years and knee pain since 6 months. Physical examination revealed restriction in shoulder movements. No neurological deficit was reported. X-ray of the right shoulder indicated rotator cuff disruption with marked OA (Fig 2).

**Fig 1: Right shoulder affected with Milwaukee shoulder syndrome**



**Fig 2: X-rays of right and left shoulders affected with Milwaukee shoulder syndrome**



**Competing interests**

The author declares that he has no competing interests.

**Citation**

Somashekar SA . Milwaukee shoulder syndrome. IJRCI. 2014;2(1):V1.

**Received:** 1 January 2014, **Accepted:** 13 February 2014, **Published:** 18 February 2014

\* Correspondence: Dr. Somashekar SA, Consultant Rheumatologist, ChanRe Rheumatology and Immunology Center and Research, HOSMAT, Bangalore, India

drsomashekarsa29@gmail.com