

CLINICAL CASE VIGNETTES

Hemophilic arthropathy

Sham Santhanam^{1*}, Madeshwaran M², Rajeswari Sankaralingam³

¹Postgraduate, Department of Rheumatology, Madras Medical College, Chennai, India

²Department of Rheumatology, Madras Medical College, Chennai, India

³Professor & HOD, Department of Rheumatology, Madras Medical College, Chennai, India

A 16-year-old boy, born through non-consanguineous marriage, presented with acute onset of left knee joint pain and swelling with no history of fever or trauma. He was a known case of hemophilia A with recurrent attacks of hemarthrosis since 3 years of age involving only the knee joints. His symptoms used to subside when receiving multiple (on demand) factor VIII infusions. Clinical examination revealed that the joints were warm, tender, and swollen. His knee radiography revealed subchondral cysts, widening of intercondylar notch, soft tissue swelling, flattened intercondylar surfaces, erosions, generalized osteopenia on anteroposterior view, and squaring of patella on lateral view (Fig.1 and 2). The findings were suggestive of chronic hemophilic arthropathy.

Fig 1: Plain radiograph anteroposterior view of left knee joint revealing: a) subchondral cysts, b) widening of intercondylar notch, c) soft tissue swelling, flattened intercondylar surfaces, erosions, and generalized osteopenia

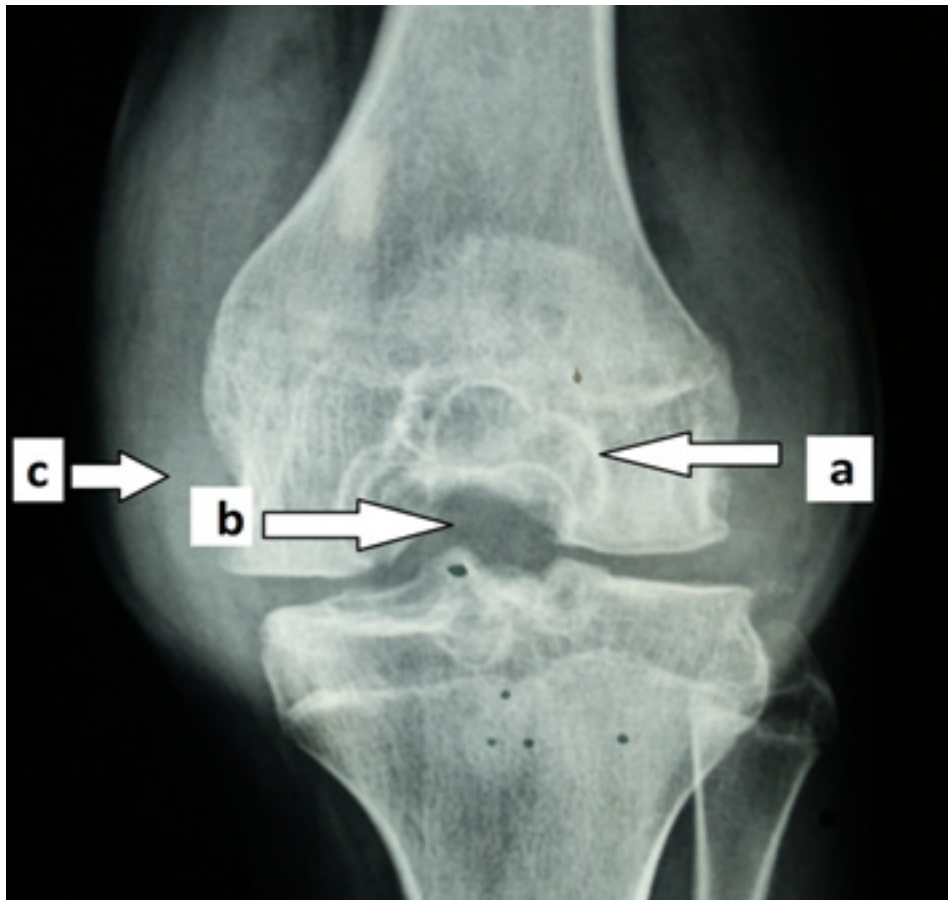
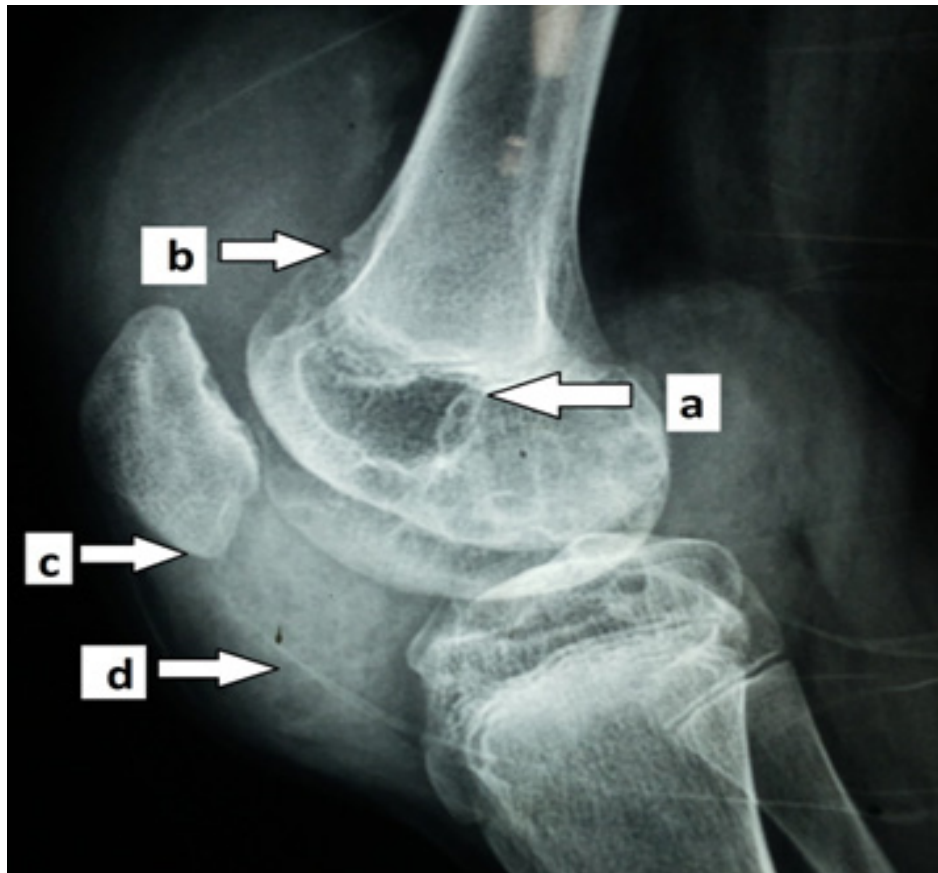


Fig 2: Plain radiograph lateral view of left knee joint revealing: a) subchondral cysts, b) erosions and squaring of distal patellar margin with d) soft tissue swelling and generalized osteopenia



Competing interests

The authors declare that they have no competing interests.

Citation

Sham S, M Madeshwaran, Rajeswari S. Hemophilic arthropathy. IJRCI. 2015;3(1):V1.

Received: 26 December 2014, **Accepted:** 3 January 2015, **Published:** 8 January 2015

*Correspondence: Dr.Sham S, Postgraduate, Department of Rheumatology, Madras Medical College , Chennai, India. itsdrsham@gmail.com